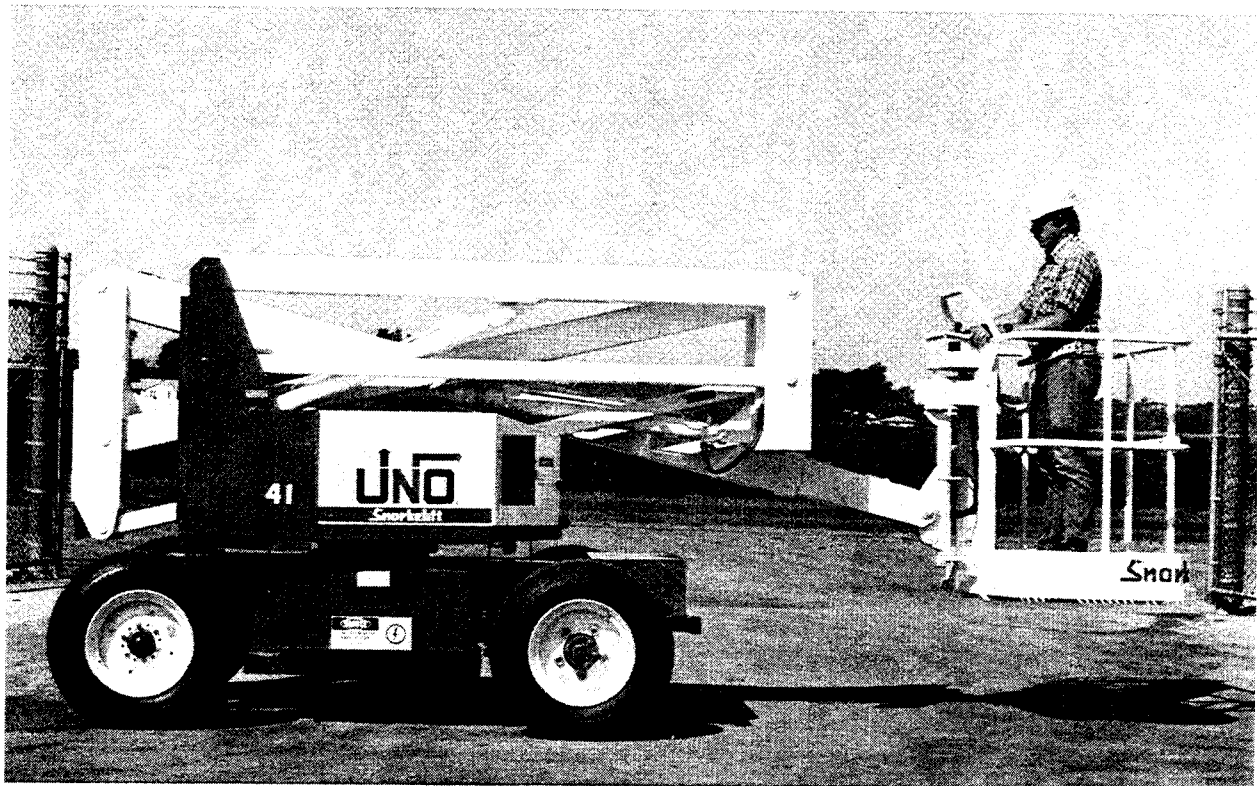


OPERATION AND MAINTENANCE MANUAL

“SNORKELIFT”

UNO-41E



Snorkel **ECONOMY**

A FIGGIE INTERNATIONAL COMPANY

ST. JOSEPH, MISSOURI

Publication no. OM02-UNO-41E
March 1994 0153295

GENERAL DESCRIPTION

MAXIMUM PLATFORM HEIGHT	40 FEET-10 INCHES
WORKING HEIGHT - NOMINAL	46 FEET-10 INCHES
HORIZONTAL REACH	23 FEET-7 INCHES
PLATFORM SIZE (STANDARD)	30 x 48 INCHES
WEIGHT (APPROXIMATE)	13,000 POUNDS
UNRESTRICTED PLATFORM CAPACITY	
STANDARD 30 x 48 ALUMINUM PLATFORM	500 POUNDS
OPTIONAL 30 x 60 ALUMINUM PLATFORM	500 POUNDS
TRAVEL SPEED	
STOWED	3.0 M.P.H.
ELEVATED	1.0 M.P.H.
TURNING DIAMETER (INSIDE)	13 FEET-0 INCHES
OVERALL LENGTH (STOWED)	15 FEET-10 ³ / ₄ INCHES
OVERALL WIDTH	5 FEET-11 ¹ / ₂ INCHES
OVERALL HEIGHT - (STOWED)	6 FEET-7 INCHES
WHEELBASE	72 INCHES
GROUND CLEARANCE	7 ¹ / ₂ INCHES
TIRES, (FOAM FILLED)	9.50-16.5, 8 PLY
ELECTRICAL SYSTEM	
PRIMARY	48 VOLT DC
SECONDARY	24 VOLT DC
BATTERIES	8 @ 6 VOLT, 220 AMP HOURS
HYDRAULIC SYSTEM MAX. PRESSURE	2,300 PSI

OSHA AND ANSI STANDARDS

The UNO-41E Snorkelift has been built in so far as we are aware, to conform with OSHA and ANSI Rules and Regulations.

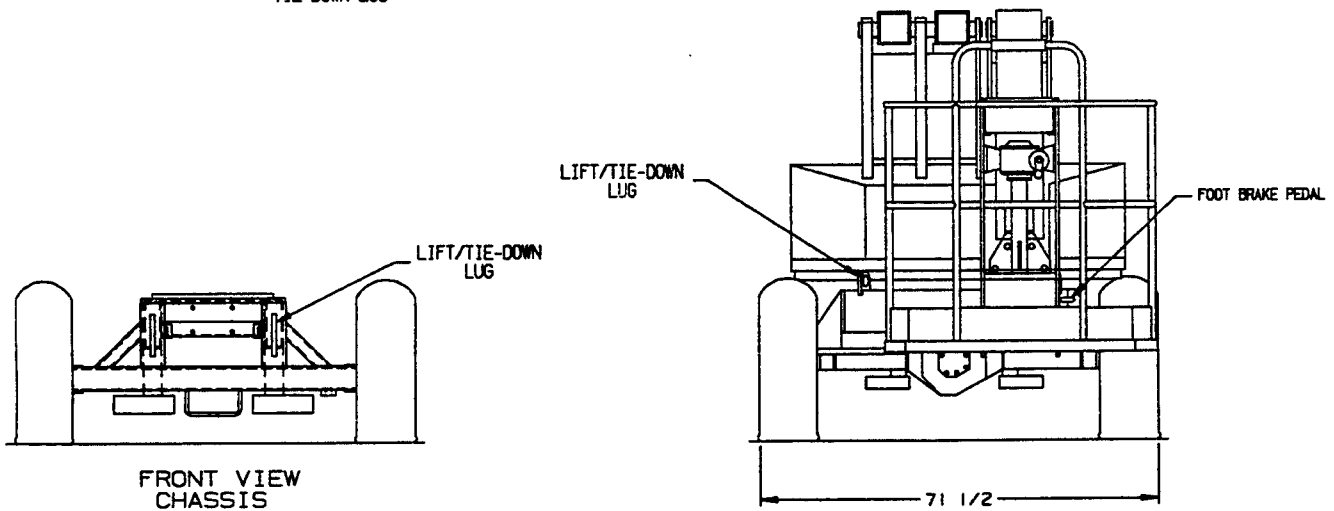
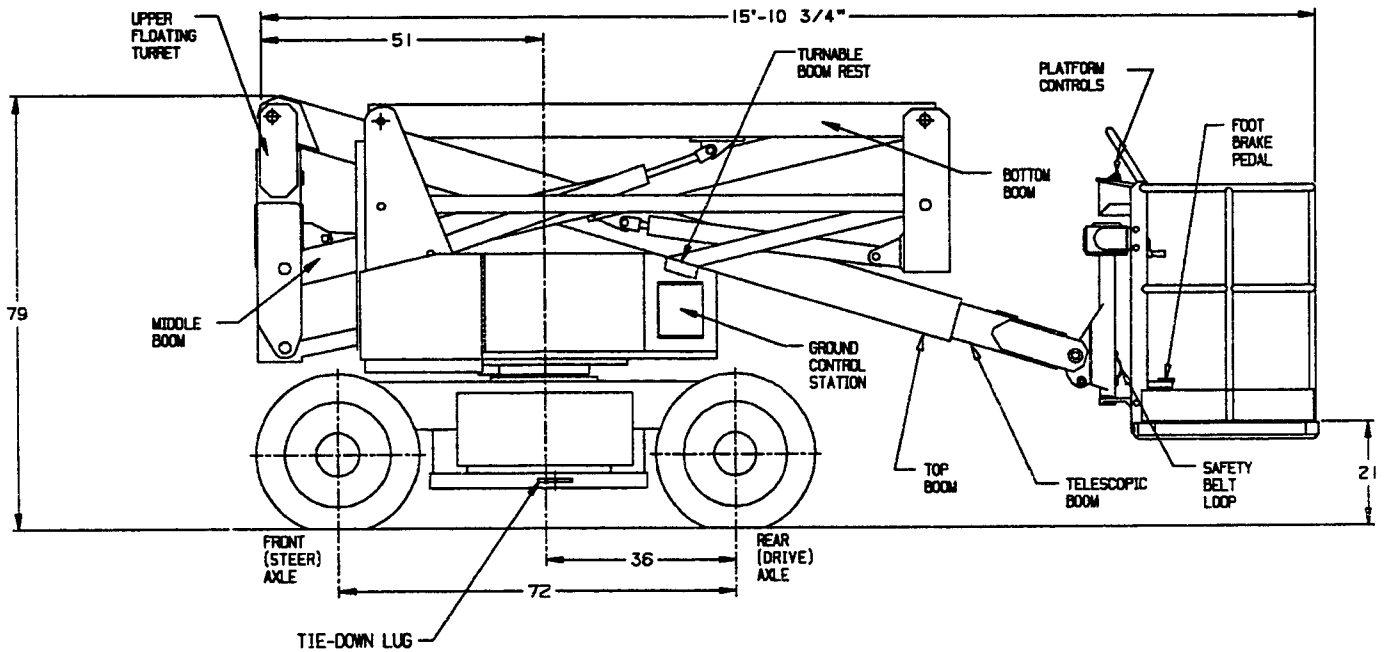
- OSHA Paragraph 1910.67 Title 29, C.F.R.
Vehicle-mounted Elevating and Rotating
Work Platforms - Labor
- OSHA Paragraph 1926.556 Title 29, C.F.R.
Aerial Lifts - Construction
- ANSI Standard A92.5-1992
Boom-Supported Elevating
Work Platforms
- CSA Standard CAN 3-B354.4-M82
Boom-Type Elevating Work Platforms

It is imperative that all owners and users of the UNO-41E Snorkelift read, understand and conform to these regulations. Ultimate compliance to OSHA regulations is the responsibility of the employer utilizing the equipment.

ANSI Standard A92.5-1992 clearly identifies requirements of all parties who may be involved with Boom-Supported Elevating Work Platforms.

A reprint of the Responsibilities of Dealers, Installers, Owners, Users, Renters, Leasors and Operators is available from Snorkel-Economy dealers or from the factory at no cost upon request.

SNORKELIFT MODEL UNO-41E



WORKING AREA MODEL UNO-41E

